

**COMMERCIAL DRIVER LICENSE KNOWLEDGE TEST
NO. 1**

1. Hydroplaning:

- ☐Occurs when there is a lot of water
- ☐Cannot occur when driving-through a puddle
- ☒Is more likely if tire pressure is low

2. Which of these statements is true about causes of vehicle fires?

- ☐Under-inflated tires will NOT cause a vehicle fire
- ☐Carrying a properly charged fired extinguisher will help prevent fires
- ☒Poor trailer ventilation can cause flammable cargo to catch on fire

3. Which of these statements is true about medicines used to treat the common cold?

- ☐It can be used while driving if you only take half the regular dosage
- ☐It should only be used when driving in daytime
- ☒It often makes you sleepy and thus should not be used while driving

4. Use your vehicle's horn when:

- ☐A car is in your way
- ☒It may help avoid a crash
- ☐You want to change lanes

5. You are checking your steering and exhaust systems in a pre-trip inspection. Which of these problems should be fixed before the vehicle is driven?

- ☐Oil on the tie rod
- ☐Grey smoke from the exhaust pipe
- ☒Steering wheel play—more than 10% (2 inches on a 20-inch wheel)

6. Which of these is a good thing to do when driving at night?

- ☒Drive slowly enough to stop within the range of your headlights
- ☐Look directly at oncoming headlights only briefly
- ☐Keep your instrument lights bright

7. Which of these statements is true about brakes?

- ☒Brakes absorb more heat to stop heavier vehicles
- ☐Brake drums cool very quickly when the vehicle is moving very fast
- ☐Brake fade is not caused by heat

8. Which of these statements is true about shipping hazardous materials?

- ☐A four-inch, circular, red hazardous material label must be on the container
- ☐Gas cylinders that will not hold a label must be shipped under cover
- ☒A four-inch, diamond-shaped, hazardous materials label must be on the container

9. You are starting your vehicle in motion from a stop. As you apply power to the drive wheels, they start to spin. You should:

- ☒Take your foot off the accelerator
- ☐Take your foot off the accelerator and apply the brakes
- ☐Try a lower gear

10. Which of these statements is true about cargo loading?

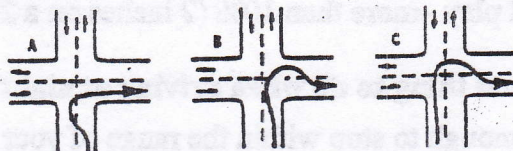
- ☐The legal maximum weight allowed by a state is considered safe for all driving conditions
- ☒State laws dictate legal weight limits
- ☐If cargo is loaded by the shipper, the driver is not responsible for overloading

11. What should you do when you see a hazard in the roadway?

- ☐Swerve around it and get back in your lane
- ☐Stop quickly and pull to the side of the road
- ☒Use your 4-way flashers or brake lights to warn others

12. You wish to turn right from a two-lane, two-way street into another. Your vehicle is so long that you must swing wide to complete the turn. Which of these figures shows how you should make the turn?

- ☐Figure A
- ☒Figure B
- ☐Figure C



13. You should avoid driving through deep puddles or flowing water. But, if you cannot, which of these steps can help keep your brakes working?

- ☐Pressing both the brake pedal and accelerator firmly after coming out of the water
- ☒Gently putting on the brakes while driving through the water
- ☐Turning on your brake heaters

14. To help you stay alert while driving, you should:

- ☒Take short breaks before you are drowsy

- ☐Schedule trips for hours that you are normally asleep
- ☐Keep the cab warm and quiet

15. Which of the following is true about preventing fatigue on a long trip?

- ☒Stop periodically for rest and exercise
- ☐Keep the vehicle closed and heated
- ☐Take an over-the-counter stimulant

16. One can recognize hazardous materials by looking at the container's:

- ☒Label
- ☐Shape
- ☐Color

17. Which of these is true about hours of service?

- ☐You must take break after every 2 hours of driving
- ☐After 1,000 hours of service you will be exempt from certain regulations
- ☒ You should balance your hours of service with enough sleep to keep you alert

18. Which of these is a good thing to remember about drinking alcohol?

- ☐The driver can control how fast the body gets rid of alcohol
- ☐Small quantities of alcohol improve reaction time
- ☒Alcohol first affects judgment and self-control

19. Which of these is true about the radiator shutters and the winterfront?

- ☐The winterfront should be closed tightly
- ☒You should remove ice from the radiator shutters
- ☐The engine may overheat if the winterfront is left open

20. You must stop on a hill or curve on a two-lane, two-way road. How far back should you place your reflective triangles?

- ☒Within 250 feet behind the vehicle
- ☐Within 500 feet behind the vehicle
- ☐As far back as necessary, so others can see your vehicle

21. Which of these statements is true about speed management?

- ☐Shady parts of the road allow better traction than open areas
- ☐Road surfaces will freeze before bridges
- ☒On slippery roads, it takes longer to stop and is harder to turn without skidding

22. Which of these items is not checked in a pre-trip inspection?

- ☐Whether all vehicle lights are working and clean
- ☐Cargo securement
- ☒Amount of fuel in the vehicle

23. Brake "fade" can be:

- ☒Caused by the brakes getting very hot
- ☐Corrected by letting up on the brakes for 1-2 seconds and then reapplying them
- ☐Caused by very old weather

24. You are driving a 40-foot vehicle at 35 mph. The road is dry and visibility is good. What is the least amount of seconds in space that you should keep in front of your vehicle to be safe?

- ☐3 seconds
- ☒4 seconds
- ☐5 seconds

25. When the roads are slippery, you should:

- ☒Make turns as carefully as possible
- ☐Stop and test the traction while going up hills
- ☐Decrease the distance that you look ahead of your vehicle

26. The *Commercial Driver Handbook* suggests several things to do when you pass a vehicle. Which of these is not one of them?

- ☐Lightly tap your horn, if needed
- ☒At night, turn on your high beams while you pass the vehicle
- ☐Assume the other driver does not see you

27. A car suddenly "cuts" in front of you creating a hazard. Which of these actions should you not take?

- ☒Honk and stay close behind the car
- ☐Slow down to prevent a crash
- ☐Signal and change lanes to avoid the car, if possible

28. You are driving a heavy vehicle. You must exit a highway using an off ramp that curves downhill. You should:

- ☒Slow down to a safe speed before the curve
- ☐Slow to the posted speed limit for the off ramp

☐ Wait until you are in the curve before downshifting

29. Which of these statements is true about vehicle fires?

- ☐If the cargo or box trailer catches on fire, open the doors as soon as you can
- ☐If your engine is on fire, open the hood as soon as you can
- ☒A burning tire should be cooled with water

30. Which of the following does not provide extra gears on some trucks?

- ☒Automatic transmissions
- ☐Auxiliary transmissions
- ☐Multi-speed rear axels

31. If someone is following you too closely (tailgating), you should:

- ☐Flash your brake lights
- ☒Increase your following distance
- ☐Signal the tailgater when it is safe to pass you

32. Which of these statements is true about tires?

- ☒You should inspect your tires every two hours or every 100 miles when driving in very hot weather
- ☐The air pressure of a tire decreases as the temperature of the tire increases
- ☐

33. Your vehicle has hydraulic brakes. While traveling on a level road, you press the brake pedal and find that it goes to the floor. Which of these statements is true?

- ☐The parking brake will not work because it is part of the same hydraulic system
- ☒Pumping the brake will generate enough pressure to stop the vehicle
- ☐Shifting into neutral will help slow the vehicles

34. Which of these statements is not true about engine belts in hot weather?

- ☒Cracking is likely to occur but is not a safety threat
- ☐You can check the tightness of the belts by pressing on them
- ☐Loose belts will not turn the water pump and / or fan on properly

35. Which of these statements is true about downshifting?

- ☒Downshift before you enter the curve
- ☐Let the rpm's decrease while the clutch is released and the shift lever is in neutral
- ☐Downshift just after you enter the curve

36. Which of these is not something you should do if your headlights are not working properly?

- ☒Leave your high beams on
- ☐Clean the headlights
- ☐Adjust the headlights

37. Most serious skis result from:

- ☐Turning too sharply
- ☐Having an uneven load
- ☒Driving too fast for conditions

38. Which piece of emergency equipment should be in your vehicle?

- ☐Circuit breakers
- ☐First aid kit
- ☒Warning devices for parked vehicles

39. The total weight of a powered unit, the trailer, and the cargo is called:

- ☐Gross vehicle weight
- ☒Gross combination weight
- ☐Gross axle weight

40. Bridge formulas permit:

- ☒Less maximum axle weight for axles that are close together
- ☐Less maximum axle weight for axles that are far apart
- ☐The same maximum axle weight for any axle spacing

41. Which of these is not a danger when an automatic transmission is forced into a lower gear at high speed?

- ☐Damage to the transmission
- ☐Loss of engine braking effect
- ☒Loss of steering control

42. Which of these statements is true about backing a heavy vehicle?

- ☒You should avoid backing whenever you can
- ☐Helpers should be out of sight and use only voice (spoken) signals to communicate with the driver
- ☐It's safer to back toward the right side of the vehicle

43. Which of these is not a good rule to follow when caring for an injured person at a collision?

- ☐If a qualified person is helping them, stay out of the way unless asked to assist
- ☐Move severely injured persons if a danger exists
- ☒Keep injured persons cool

44. Truck escape ramps

- ☒Help avoid damage to vehicles
- ☐Cannot be used by certain types of heavy vehicle
- ☐Are not for buses

45. The distances that you should look ahead of your vehicle while driving is _____ at low speeds.

- ☐1/2 block
- ☒1 block
- ☐2 block

46. Which of these statements is a good rule to remember when your vehicle is in a traffic emergency and may collide with another vehicle:

- ☒You can almost always turn to miss an obstacle more quickly than you can stop
- ☐Stopping is always the safest action in a traffic emergency
- ☐Leaving the road is always more risky in a traffic emergency

47. You can see this sign on a vehicle ahead of you. What does the sign mean?

- ☒Slow-moving vehicle
- ☐Hazardous materials on board
- ☐Student driver

48. The distance that you should look ahead of your vehicle while driving is about _____ mile at highway speeds.

- ☐1/8 mile
- ☒1/4 mile
- ☐1/2 mile

49. The best time to take a short break is:

- ☒Before you feel drowsy or tired
- ☐Immediately after yawning several times
- ☐Immediately after you have drifted off the road

50. You are driving a new truck with a manual transmission. What gear will you probably have to use to take a long, steep downhill grade?

- ☐The same gear you would use to climb the hill
- ☒A lower gear than you would use to climb the hill
- ☐A higher gear than you would use to climb the hill